



MONTHLY MEMBERSHIP PROGRESS REPORT

District 2 A1

Results as of: 05/31/2018

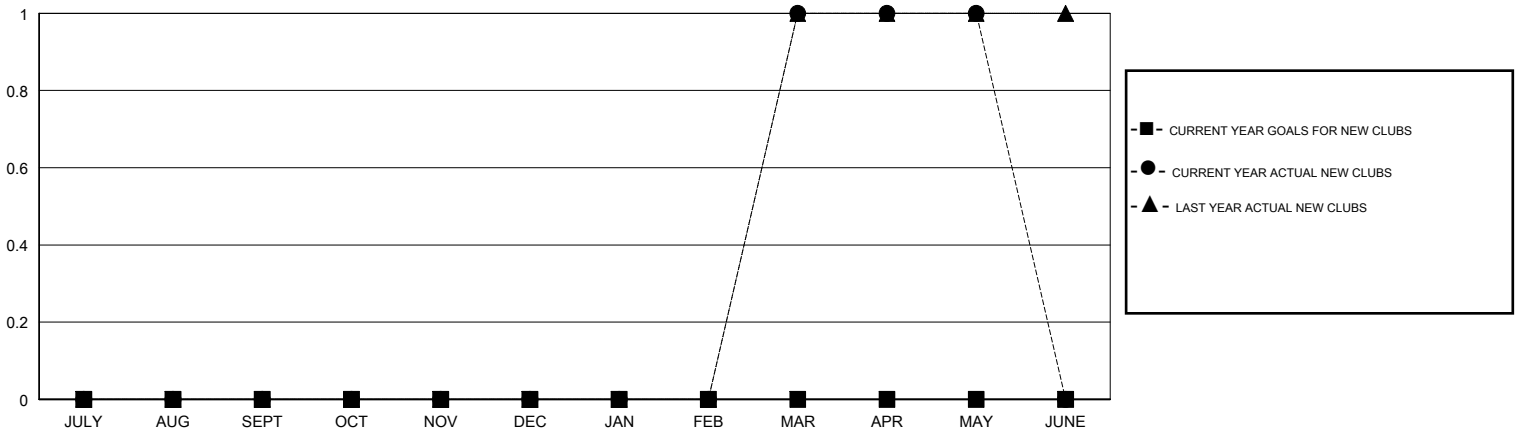
GMT: JOE AL PICONE

LOCATION TEXAS

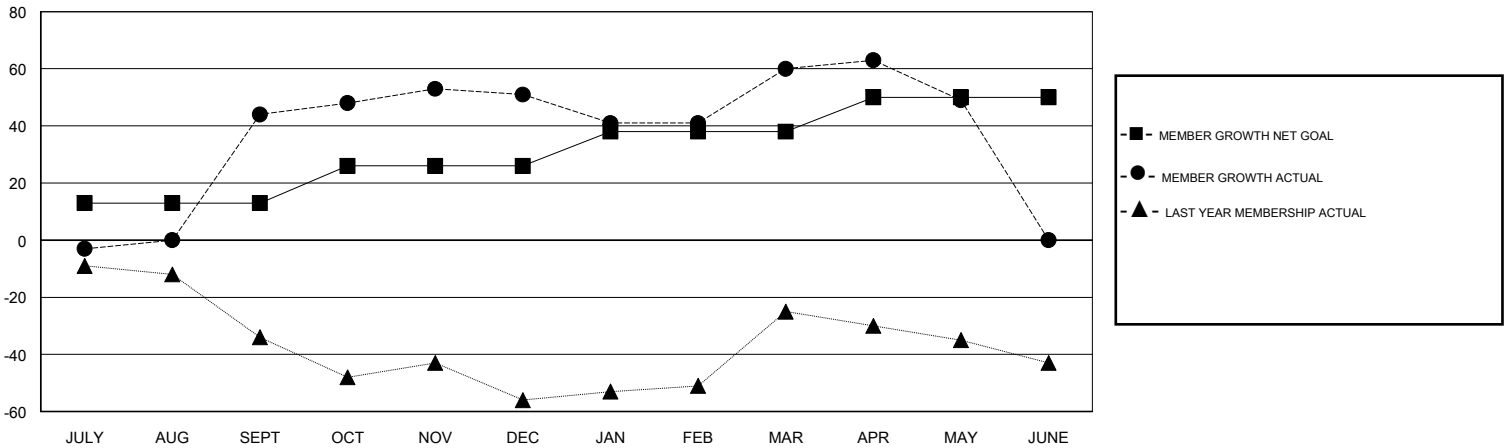
GMT CA

Clubs				Members			
RESULTS FOR 2017-2018				RESULTS FOR 2017-2018			
QUARTER	NEW CLUB GOAL	NEW CLUBS	DROPPED CLUBS	QUARTER	MEMBER GROWTH NET GOAL	MEMBER GROWTH ACTUAL	DROPPED MEMBERS ACTUAL (including transfers)
JULY/AUG/SEPT	0	0	0	JULY/AUG/SEPT	13	79	32
OCT/NOV/DEC	0	0	0	OCT/NOV/DEC	13	55	46
JAN/FEB/MAR	0	1	0	JAN/FEB/MAR	12	75	60
APR/MAY/JUNE	0	0	0	APR/MAY/JUNE	12	28	39

GOALS AND ACTUAL NEW CLUBS CUMULATIVE



GOALS AND ACTUAL MEMBERS CUMULATIVE



DROPPED CLUBS: 0	35 CLUBS OF 50 ADDED 1 OR MORE NEW MEMBERS	<u>GENDER DISTRIBUTION</u>	
DROPPED MEMBERS		MALE	910 (66.76%)
DECEASED	21	FEMALE	453 (33.24%)
CLUB CANCELLED	0	Women Percentage Fiscal Year Goal: 30%	
OTHER	156	TOTAL FAMILY UNIT MEMBERS	190
TOTAL	177	FAMILY MEMBERS PAYING HALF DUES	98

[CLICK HERE FOR CUMULATIVE MEMBERSHIP DATA](#)